

WOLFFKRAN

WOLFF 6020 *clear*
The 2nd generation.



EFFICIENT - ECONOMICAL - FLEXIBLE

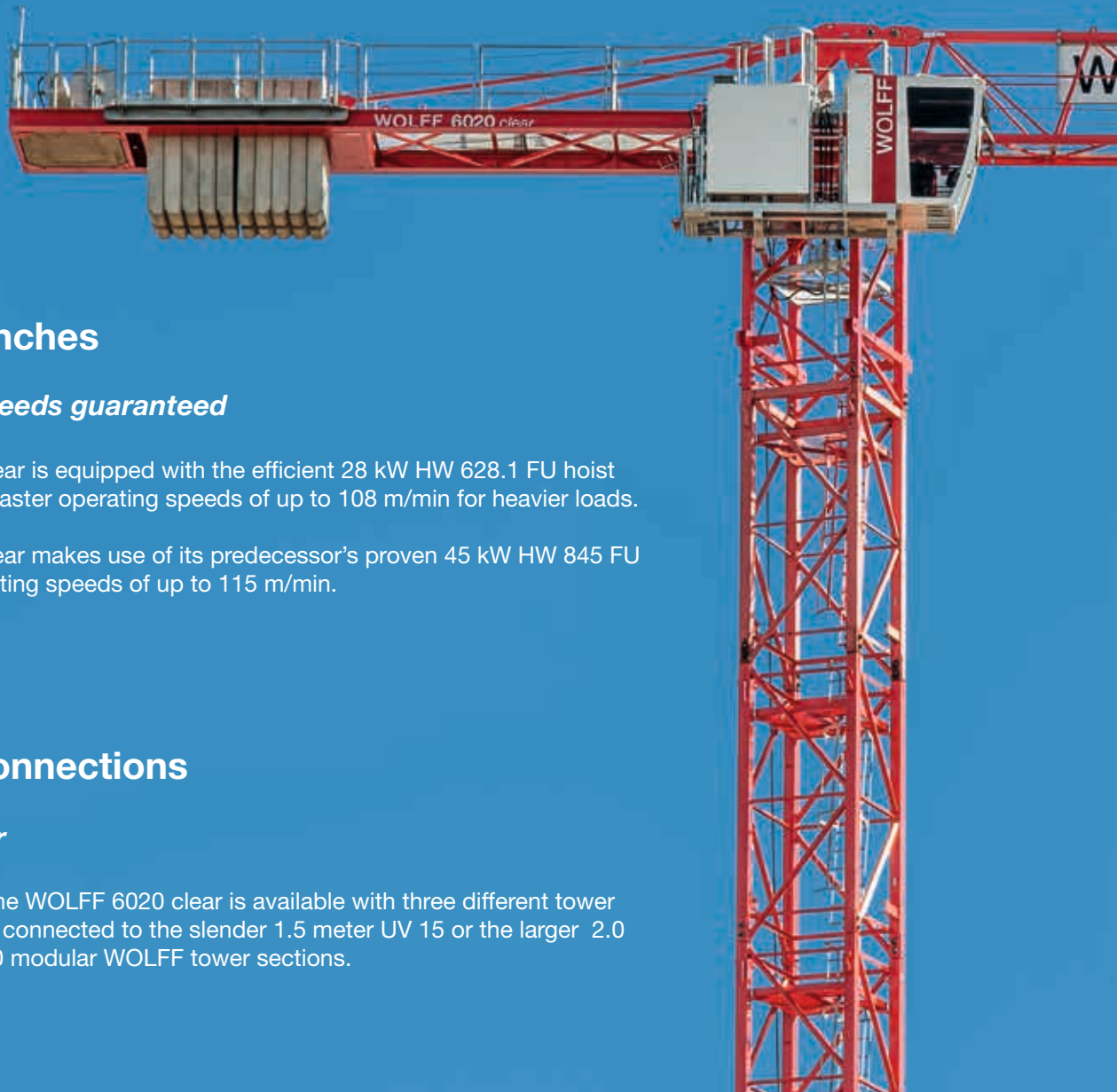
The WOLFF 6020 *clear*

2nd generation WOLFF flat top crane in the 140 tm class

Succession: With the WOLFF 6020 clear, WOLFFKRAM presents the successor to the popular WOLFF 6015 clear introduced in 2008.

Top performance in two versions: Like its predecessor, the WOLFF 6020 clear is available in a 6 and an 8 tonne version with a maximum jib radius of 60 meters. The tip load has been increased from 1.5 to 2.0 tonnes in the WOLFF 6020.6 clear and to 1.8 tonnes in the WOLFF 6020.8 clear.

Up-to-date: Efficient hoist winches and countless design details of the latest WOLFF clear crane models round off its profile and guarantee even more efficiency and safety.



The Hoist Winches

Fast operating speeds guaranteed

The WOLFF 6020.6 clear is equipped with the efficient 28 kW HW 628.1 FU hoist winch providing even faster operating speeds of up to 108 m/min for heavier loads.

The WOLFF 6020.8 clear makes use of its predecessor's proven 45 kW HW 845 FU hoist winch with operating speeds of up to 115 m/min.

The Tower Connections

As flexible as ever

Like its predecessor, the WOLFF 6020 clear is available with three different tower connections. It can be connected to the slender 1.5 meter UV 15 or the larger 2.0 meter TFS 20 or UV 20 modular WOLFF tower sections.

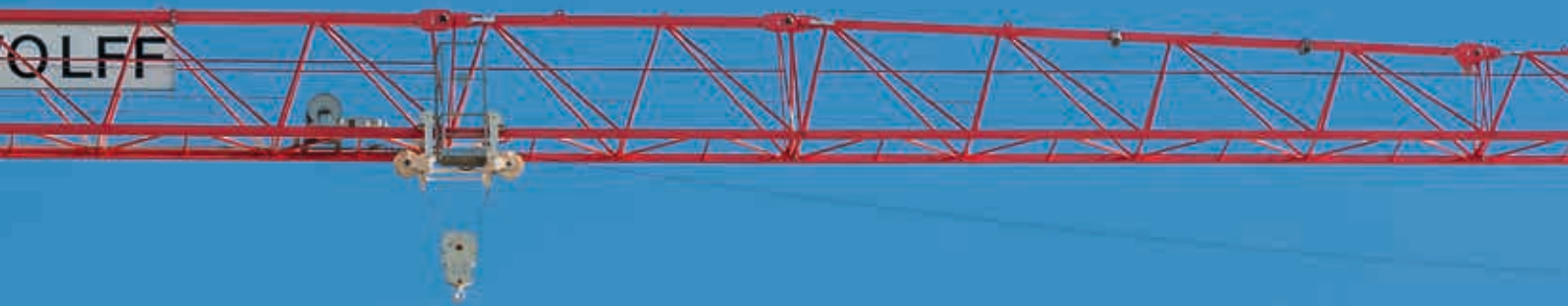
Clear(ly) Proven Qualities

Efficient – no frills - design

The tower top section of the WOLFF 6020 clear presents itself orderly, as usual for WOLFF clear cranes, offering easy access to all crane components and the cabin platform with the switch cabinet without any obstructive parts or tripping hazards getting in the way.

Simply compact

The cabin platform with the WOLFF CAB cabin, switch cabinet and resistor banks comes preassembled as one unit from the manufacturing site and can be transported and lifted on to the crane in one piece. Only two bolts are necessary to connect it to the crane. As soon as attached, the slewing part can be rotated to facilitate further assembly.



New features of the WOLFF 6020 *clear*

The Jib

The newly designed trolley with simple track rollers and lateral guide rollers provides for excellent movement of the trolley along the jib with less maintenance required.

New connections on the lower chords of the jib sections optimize the transmission of forces in the jib and allows for smaller bolts to be used, making the jib assembly easier.

Optimized platforms on the basic jib section and a rope reel for the trolley rope provide better access and added safety.



The Counter Jib

Clever details for even greater efficiency and safety

Thanks to transport aids in the form of a special support structure on the counter jib, up to three jib sections can now be safely and efficiently positioned there for transport.

The new, wide platform with edge strips offers added safety on the counter jib, as do the additional edge strips and a PPE-compatible railing in the hoist winch area.

The bracing rods come preassembled on the counter jib and only need to be placed on the integrated assembly supports for assembly.

An auxiliary crane with a lifting capacity of one tonne can also be mounted on the counter jib for maintenance work that would otherwise require another crane on the site.

The Counterweight Blocks

Truly economical

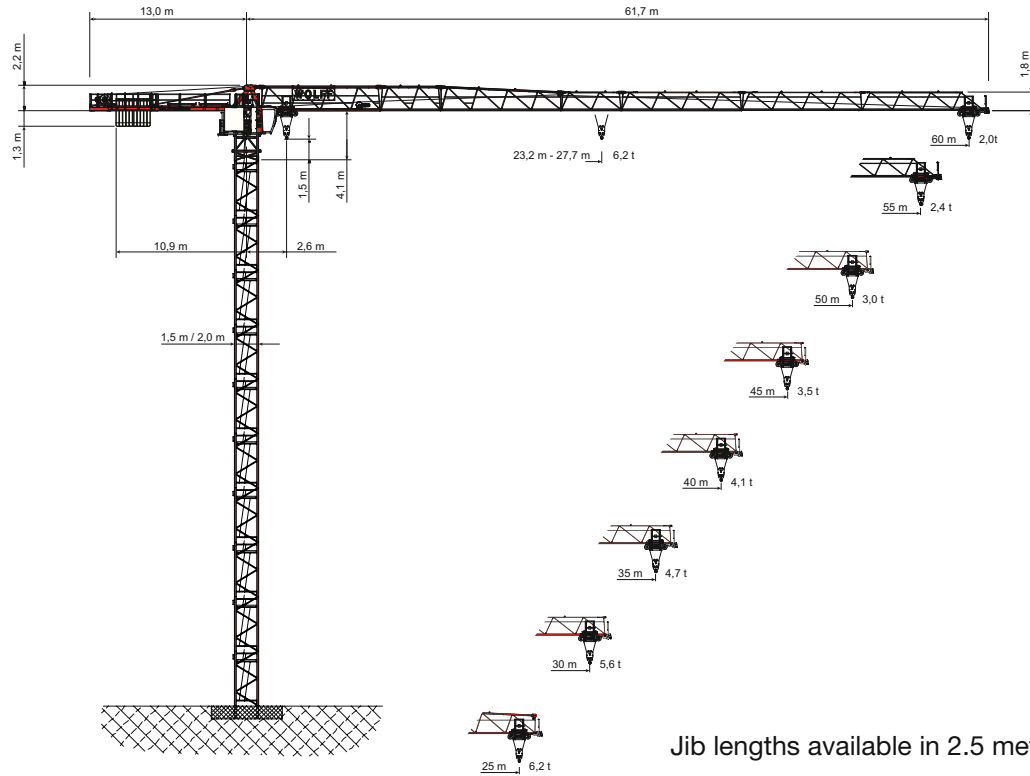
The 2.05 tonne counterweight blocks are all the same size and identical to the counterweight blocks for the WOLFF clear models WOLFF 5020 and WOLFF 6015. They are now no longer included in the standard crane package, but can be bought separately, facilitating parts flexibility in the crane fleet.



WOLFF 6020.6 clear

Technical Information

Plan Drawing · WOLFF 6020.6 clear



Jib lengths available in 2.5 meter increments.

Load Chart [t] · WOLFF 6020.6 clear

Ausladung / jib radius / Portée [m]		20,0	22,5	25,0	27,5	30,0	32,5	35,0	37,5	40,0	42,5	45,0	47,5	50,0	52,5	55,0	57,5	60,0
Auslegerlänge / jib length / Longueur de flèche [m]	60,0 2,6 - 23,2	6,2	6,2	5,7	5,1	4,7	4,2	3,9	3,6	3,3	3,1	2,9	2,7	2,5	2,4	2,2	2,1	2,0
	57,5 2,6 - 23,9	6,2	6,2	5,9	5,3	4,8	4,4	4,0	3,7	3,4	3,2	3,0	2,8	2,6	2,5	2,3	2,2	
	55,0 2,6 - 24,5	6,2	6,2	6,1	5,5	4,9	4,5	4,1	3,8	3,5	3,3	3,1	2,9	2,7	2,6	2,4		
	52,5 2,6 - 24,9	6,2	6,2	6,2	5,6	5,0	4,6	4,2	3,9	3,6	3,4	3,1	2,9	2,8	2,6			
	50,0 2,6 - 26,6	6,2	6,2	6,2	6,0	5,4	5,0	4,6	4,2	3,9	3,6	3,4	3,2	3,0				
	47,5 2,6 - 26,7	6,2	6,2	6,2	6,0	5,4	5,0	4,6	4,2	3,9	3,7	3,4	3,2					
	45,0 2,6 - 27,2	6,2	6,2	6,2	6,1	5,6	5,1	4,7	4,3	4,0	3,7	3,5						
	42,5 2,6 - 27,6	6,2	6,2	6,2	6,2	5,7	5,2	4,8	4,4	4,1	3,8							
	40,0 2,6 - 27,7	6,2	6,2	6,2	6,2	5,7	5,2	4,8	4,4	4,1								
	37,5 2,6 - 27,6	6,2	6,2	6,2	6,2	5,7	5,2	4,8	4,4									
	35,0 2,6 - 27,3	6,2	6,2	6,2	6,2	5,6	5,1	4,7										
	32,5 2,6 - 27,3	6,2	6,2	6,2	6,1	5,6	5,1											
	30,0 2,6 - 27,4	6,2	6,2	6,2	6,2	5,6												
27,5 2,6 - 27,5	6,2	6,2	6,2	6,2														
25,0 2,6 - 25,0	6,2	6,2	6,2															

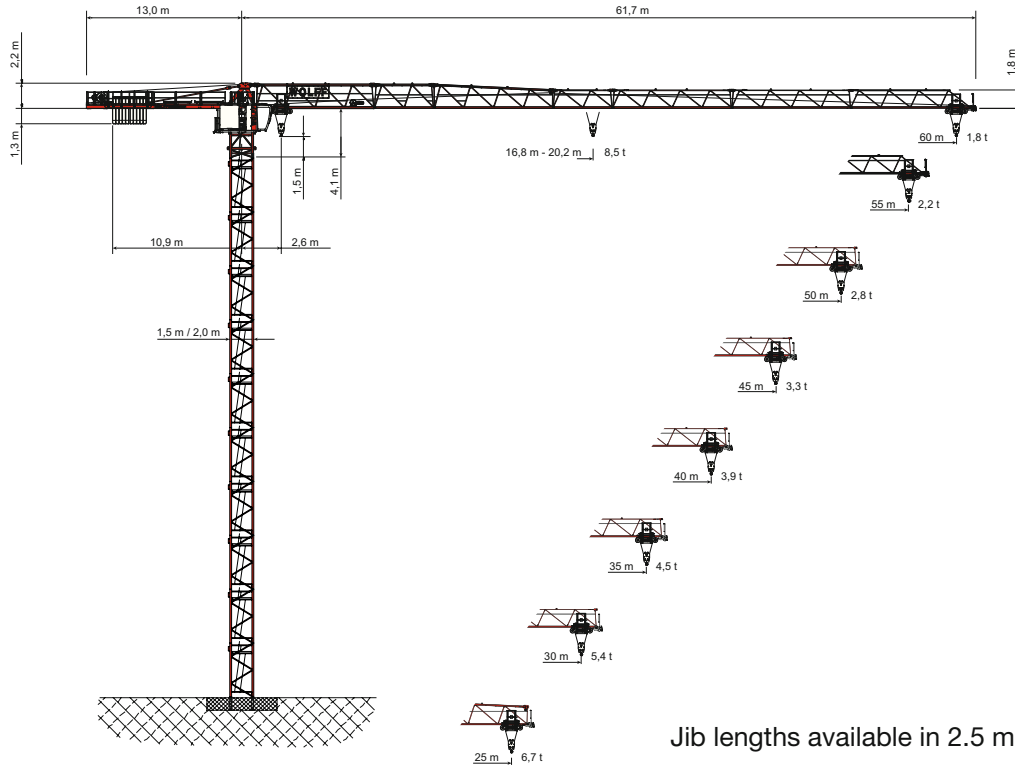
Drives · WOLFF 6020.6 clear · (Hw 628.1 FU)

Motor [kW] motor Moteur	28	7,5	7,5	2 x 5,5
Geschwindigkeit speed Vitesse	0 - 1,1 t 0 ... 108 m/min stufenlos / stepless / en continue 0 - 6,2 t 0 ... 23 m/min	0 - 3,0 t 0 ... 100 m/min stufenlos / stepless / en continue 0 - 6,2 t 0 ... 78 m/min	0,80 min ⁻¹	25,0 m/min
Hakenweg [m] hook path course du crochet	190			

WOLFF 6020.8 clear

Technical Information

Plan Drawing · WOLFF 6020.8 clear



Jib lengths available in 2.5 meter increments.

Load Chart [t] · WOLFF 6020.8 clear

Ausladung / jib radius / Portée [m]		20,0	22,5	25,0	27,5	30,0	32,5	35,0	37,5	40,0	42,5	45,0	47,5	50,0	52,5	55,0	57,5	60,0
Ausladung / jib length / Longueur de flèche [m]	60,0 2,6 - 16,8	7,0	6,2	5,5	4,9	4,4	4,0	3,7	3,4	3,1	2,9	2,7	2,5	2,3	2,2	2,0	1,9	1,8
	57,5 2,6 - 17,4	7,3	6,4	5,7	5,1	4,6	4,2	3,8	3,5	3,2	3,0	2,8	2,6	2,4	2,3	2,1	2,0	
	55,0 2,6 - 17,8	7,5	6,6	5,8	5,2	4,7	4,3	3,9	3,6	3,3	3,1	2,9	2,7	2,5	2,3	2,2		
	52,5 2,6 - 18,1	7,6	6,7	5,9	5,3	4,8	4,4	4,0	3,7	3,4	3,2	2,9	2,7	2,6	2,4			
	50,0 2,6 - 19,4	8,2	7,2	6,4	5,8	5,2	4,7	4,4	4,0	3,7	3,4	3,2	3,0	2,8				
	47,5 2,6 - 19,4	8,2	7,2	6,4	5,8	5,2	4,8	4,4	4,0	3,7	3,5	3,2	3,0	2,8				
	45,0 2,6 - 19,9	8,4	7,4	6,6	5,9	5,4	4,9	4,5	4,1	3,8	3,5	3,3						
	42,5 2,6 - 20,1	8,5	7,5	6,7	6,0	5,4	5,0	4,6	4,2	3,9	3,6							
	40,0 2,6 - 20,2	8,5	7,6	6,7	6,0	5,5	5,0	4,6	4,2	3,9								
	37,5 2,6 - 20,2	8,5	7,5	6,7	6,0	5,5	5,0	4,6	4,2									
	35,0 2,6 - 20,0	8,5	7,5	6,6	6,0	5,4	4,9	4,5										
	32,5 2,6 - 19,9	8,5	7,4	6,6	5,9	5,4	4,9											
	30,0 2,6 - 20,0	8,5	7,5	6,6	6,0	5,4												
	27,5 2,6 - 20,1	8,5	7,5	6,7	6,0													
	25,0 2,6 - 20,2	8,5	7,5	6,7														

Drives · WOLFF 6020.8 clear · (Hw 845 FU)

Motor [kW] motor Moteur	45	7,5	7,5	2 x 5,5
Geschwindigkeit speed Vitesse	0 - 1,6 t 0 ... 115 m/min stufenlos / stepless / en continue 0 - 8,5 t 0 ... 26 m/min	0 - 3,0 t 0 ... 100 m/min stufenlos / stepless / en continue 0 - 8,5 t 0 ... 65 m/min	0,80 min ⁻¹	25,0 m/min
Hakenweg [m] hook path course du crochet	190			

The WOLFF Standard

Best all-round visibility from the WOLFF CAB

The WOLFF CAB crane cabin offers optimum visibility and over-view. The adjustable seat and ergonomically designed control panels allow for fatigue-free working. Tinted windows, quality blinds, an effective heating system and air conditioning ensure a comfortable working environment, regardless of season or climate zone. Further amenities such as a radio with SD/USB ports and Bluetooth, a drinks cooler, plenty of sockets and ample storage space are also included as standard. An easy-to-read 7-inch touchscreen color monitor optimally supports the crane operator.



Economical transportation on land and water

All components of the WOLFF clear cranes are designed to fit on regular trucks as space-saving as possible. Thanks to proven suspension brackets on all crane components, these can be safely and quickly loaded and unloaded. If a WOLFF clear crane needs to travel overseas, no problem, all crane and tower components are container compatible.



Everything under (WOLFF crane) control

WOLFF cranes are fitted with the latest crane controls to ensure highest levels of safety. They adjust the performance of all drives to the requirements of the job site and support the crane operator with many security features, such as overload protection, working range limitation and an anti-collision interface. Also integrated as standard is the WOLFF Boost function increasing load capacity by 10% by automatically turning off one of the drives, as well as the remote data transmission system WOLFF Link facilitating maintenance and repairs.



Best service for best performance

WOLFF cranes are fitted with platforms, railings and further elements designed to increase safety around all major crane components and parts. Further, all WOLFF cranes feature an electrical central lubrication of the slew ring, a slip ring mechanism for optimal signal transmission and a temperature-controlled switch cabinet with heating and ventilation ensuring efficient and uninterrupted operating time of the crane. Together with the remote maintenance options offered by WOLFF Link and the experienced quick-response WOLFF Service-Teams nearby, you can rest assured that the WOLFF cranes on your site will perform day in and out.



WOLFFKRAN International AG

Baarermattstrasse 6
CH-6340 Baar
Tel. +41 41 766 85 00
Fax +41 41 766 85 99
info@wolffkran.com

Der Leitwolf
The leader of the pack.

www.wolffkran.com

